



DELUXE COMBISTEAMER

MODEL: 11 X 1/1 GN - DIGITAL - GAS

SPECIFICATIONS

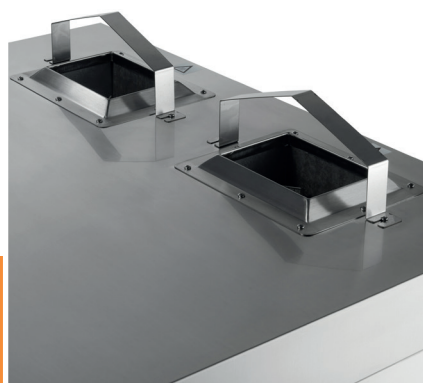
Gas Power	17,5 kW
Connection	230V / 50Hz / 1phase
Nett Weight	141.0 Kg
Gross Weight	174.0 Kg
Machine Dimensions	H1130 x W730 x D849 mm
Packaging Dimensions	H1276 x W788 x D905 mm
Packaging Volume	1.00 CBM
Packaging Material	Carton Box with Foam
HS Customs Code	84172090
EAN Code	8720365344206
Article Number	08560681

- 👑 HIGH QUALITY / LOW PRICES
- 👑 24 / 7 SUPPORT & SERVICE
- 👑 IMMEDIATELY AVAILABLE FROM STOCK
- 👑 TECHNICAL DEPARTMENT & WARRANTY
- 👑 EXCELLENT CUSTOMER SATISFACTION



Professional, easy-to-operate combi steamer
 Robust stainless steel housing, door and inner chamber
 Powerful stainless steel heating elements
 Efficient heat distribution (semi-static and ventilated)
 Equipped with 3 fans with reverse function
 Double athermal glazing
 Digital touch display for humidity, temperature and time
 Touch display with Black Mask technology
 Cooking time adjustable in minutes and hours
 Fully adjustable for perfect preparation
 Complete with 100 programs with 10 stages
 10 steam levels: 10% - 100% steam
 Temperature from 30°C to 260°C
 Preheating temperature 180°C
 Equipped with a cooling function
 Automatic fault indication system
 With USB port for HACCP data and programs
 Safety switch against overheating
 With lighting in the inner chamber and door
 Stands on 4 height-adjustable feet
 Inner chamber dimensions: W530 x D325 x H980 mm
 Tray distance: 80 mm

This product is supplied without plug



Double chimney on top



With lighting in the inner chamber



Easily adjustable door